



# St Elphin's School

*Darley Dale*

APPEAL FUND 1990



**TOWARDS THE 21ST CENTURY**

## TOWARDS THE 21ST CENTURY

By 1994 St Elphin's School will have flourished for 150 years. From its foundation in Warrington and subsequent move to Darley Dale in 1904, the School has stood for excellence in all its forms.

Each generation of pupils has benefited from the Governors' determination to make available buildings and resources on a continuing basis. This resolve has supported the School's aim, which is to provide the best possible education for its girls. Momentum has increased since 1960 and the enthusiasm and support of parents, former pupils and the Friends of St Elphin's, have resulted in a major building and refurbishment programme.

We must maintain this programme in the face of the great challenges of the future.

This brochure describes the ways in which St Elphin's will begin to meet those challenges. Exceptional goodwill and generosity have been shown in the past in many ways, but we need your help to maintain and build upon our achievements and increase even further our opportunities to enhance standards of excellence.

The Governors and Friends now look to the future with renewed energy and commitment with the launch of this Appeal for £550,000. £200,000 has already been provided and we therefore need to raise the balance. This brochure shows where the money will go and we ask for your generous support to help us achieve our goals as we move towards the 21st century.

*Peter Pollard*



DIOCESE OF LIVERPOOL



Definitions of education abound. The proven claim of St. Elphin's is to provide a firm foundation for a full and enterprising life. Fundamental to this ideal is the Christian Faith and the life of our chapel. St. Elphin's is a Church School. We firmly believe that the development and enrichment of the spiritual part of a personality isn't just an optional extra.

There is a recognised connexion between religion and conduct. The latter arises from the former. Your governors hope that at St Elphin's your daughters catch a vision – yes, of academic excellence; yes, of excellence on the sportsfield; yes, of excellence in the Music Room, but also of excellence in becoming a fully integrated human being in body, mind and spirit.

Such a vision will help to create a good society for the Twenty-First Century in which St. Elphin's girls can provide a distinctive leadership. Such a vision is worth every penny of a major investment. I hope that you as parents and friends, as old girls and general supporters will catch something of this vision and respond with generosity. Our Appeal is more than money. It is a request to support a creative vision for your daughters.

I have been associated with St Elphin's for many years and have watched it grow both in academic excellence and in new buildings necessary to house the modern classrooms with their up-to-date technology.

I have no hesitation in commending the aims of this appeal to parents and asking them seriously to consider joining the Double Century Club, thereby hastening the building programme of a new Junior School and making more rooms at Devonshire House.

I hope to have the pleasure of seeing you at Chatsworth on 18 May 1991.

*Michael Wray*

The Bishop of Warrington *Chairman of Governors Church House Liverpool*

*Deborah Devonshire*

The Duchess of Devonshire *School's Visitor Chatsworth House*

# WHAT HAS BEEN ACHIEVED

1989

**The Warrington Music Centre**  
The centre has superior facilities for teaching, music practice and ensemble work. The Duchess of Devonshire opened this centre at Speech Day 1989.

1984

**Specialist Teaching Block**  
The Hopkins Building has specialist rooms for art and craft, mathematics and computing. This continued the School's policy of creating specialist teaching rooms. Art and craft facilities had been inadequate and the School needed to house developing technological resources.

1976

**All-weather Playing Area**  
The area incorporating two hockey pitches and 16 tennis courts.

1975

**Teaching Block and Library**  
The Thornton Block incorporates eight classrooms and a library which was carpeted and redesigned in 1984. The library houses some 10,000 books and is used throughout the week as an important resource centre for senior school girls. The library stock is computerised and the librarians trained to use computers as an essential tool in their work.

1971

**Study Bedrooms**  
A house with study bedrooms and other amenities for the Upper Sixth. The Sixth Form has grown in size over the past decade and this is why part of the money raised by this Appeal is needed to provide more study-bedroom accommodation. Sixth Formers at St Elphin's will then have excellent conditions for both work and recreation.

1969

**Specialist Teaching Rooms**  
A teaching block with science laboratories and specialist rooms for languages, history, geography and home economics.

1968

**Gymnasium**  
A modern gymnasium with facilities for badminton, volley ball, judo, etc. Used by the PE Department for teaching and as a recreational facility.

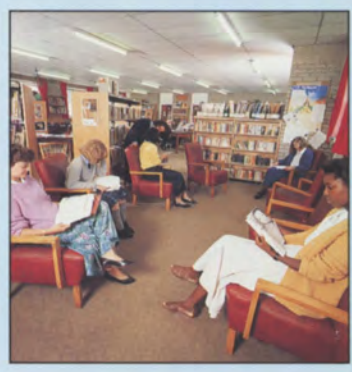
1966

**Additional Hard Tennis Courts**

1963

**Stopford Assembly Hall**  
Provision of a new assembly hall/dining room with a generously proportioned stage. Used for either family-style catering or as a cafeteria, the hall is large enough to hold up to 400 people for plays, concerts and social events.

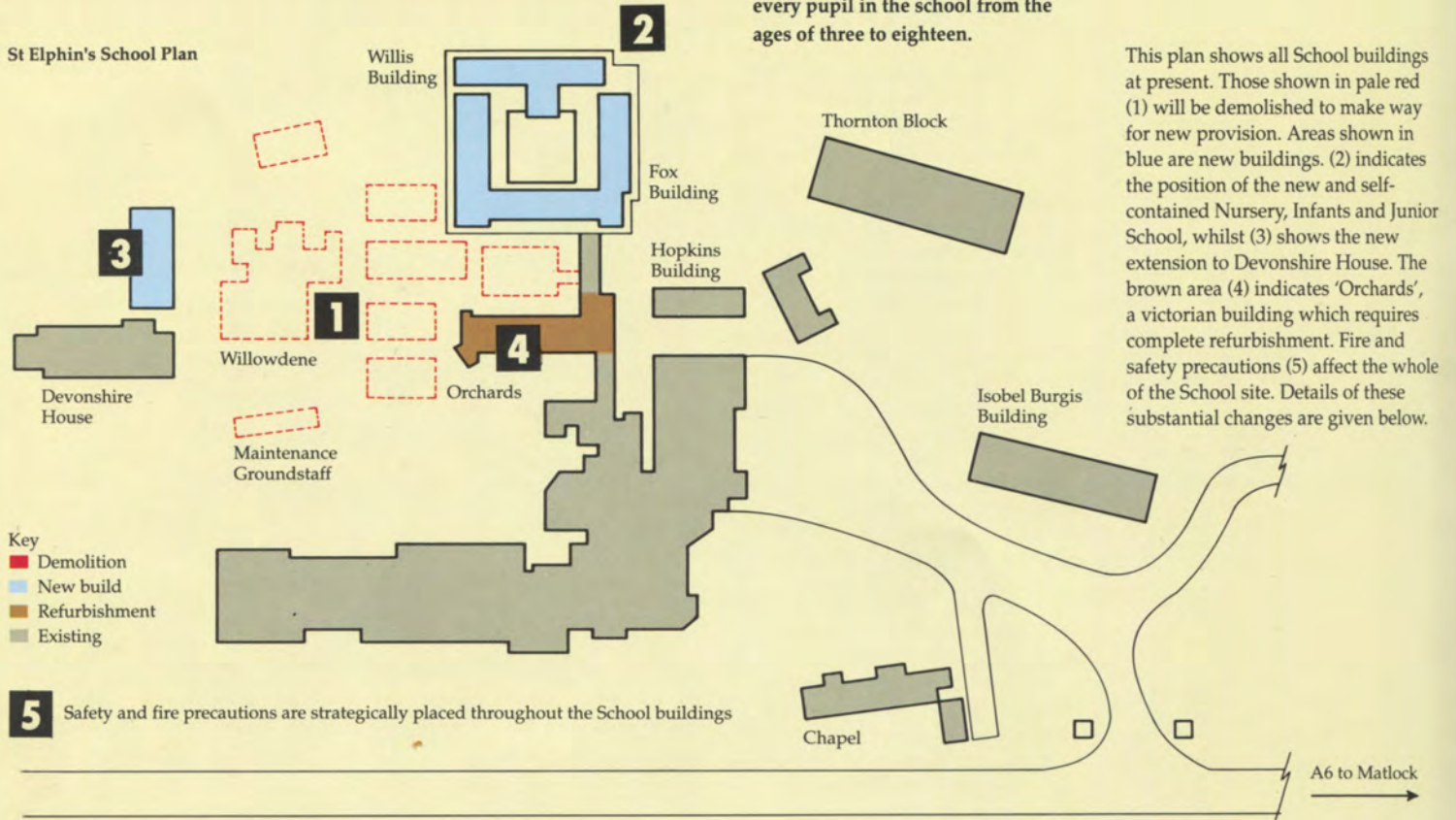
A continuing programme of improvement is a feature of School management and below is a list of major provisions undertaken. Additional improvements have included a boarding house, new houses for the Head and Bursar, and modernisation of Grove Cottage and the Lodge to provide resident staff accommodation.



# INTENTIONS FOR THE FUTURE

The Governors have created a 'structure plan' which will ensure that St Elphin's School has the best possible facilities throughout the 90s and well beyond. The strategy meets current needs and expected future requirements in a number of specific areas, which will benefit every pupil in the school from the ages of three to eighteen.

St Elphin's School Plan



This plan shows all School buildings at present. Those shown in pale red (1) will be demolished to make way for new provision. Areas shown in blue are new buildings. (2) indicates the position of the new and self-contained Nursery, Infants and Junior School, whilst (3) shows the new extension to Devonshire House. The brown area (4) indicates 'Orchards', a victorian building which requires complete refurbishment. Fire and safety precautions (5) affect the whole of the School site. Details of these substantial changes are given below.

- Key
- Demolition
  - New build
  - Refurbishment
  - Existing

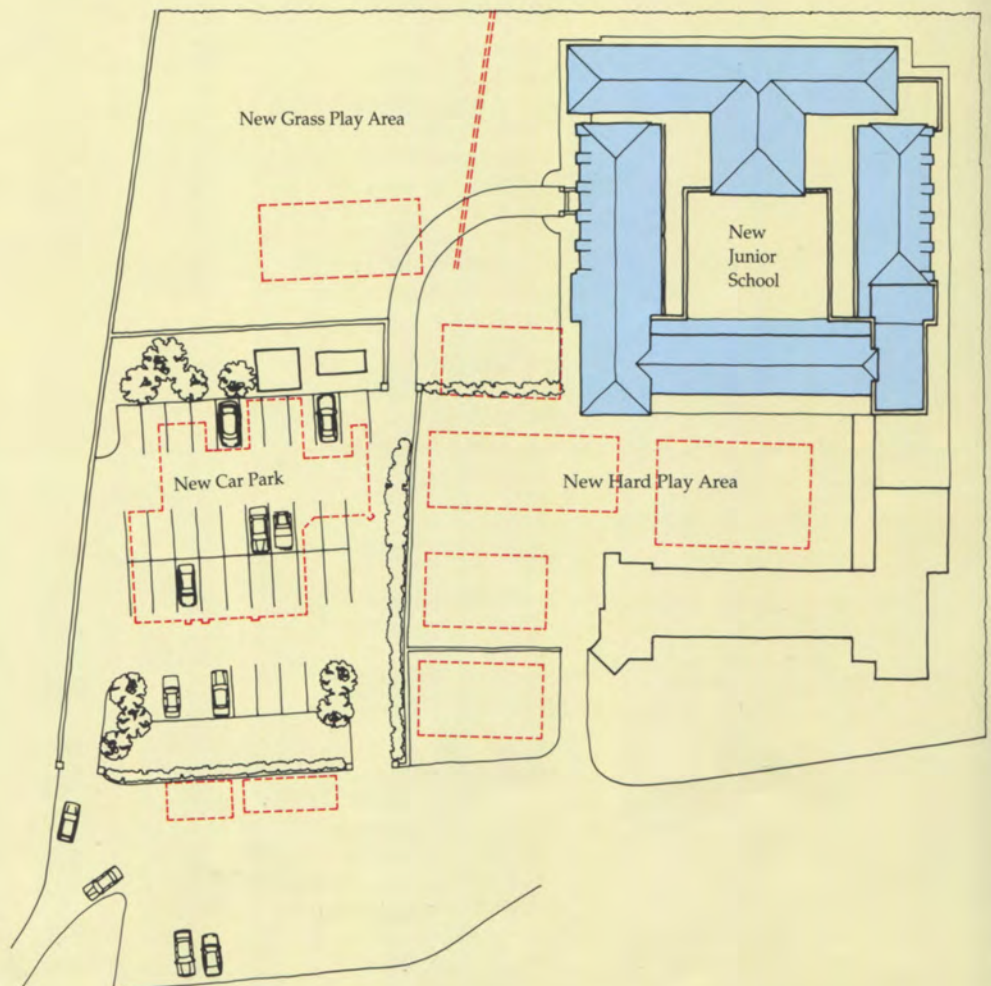
**5** Safety and fire precautions are strategically placed throughout the School buildings

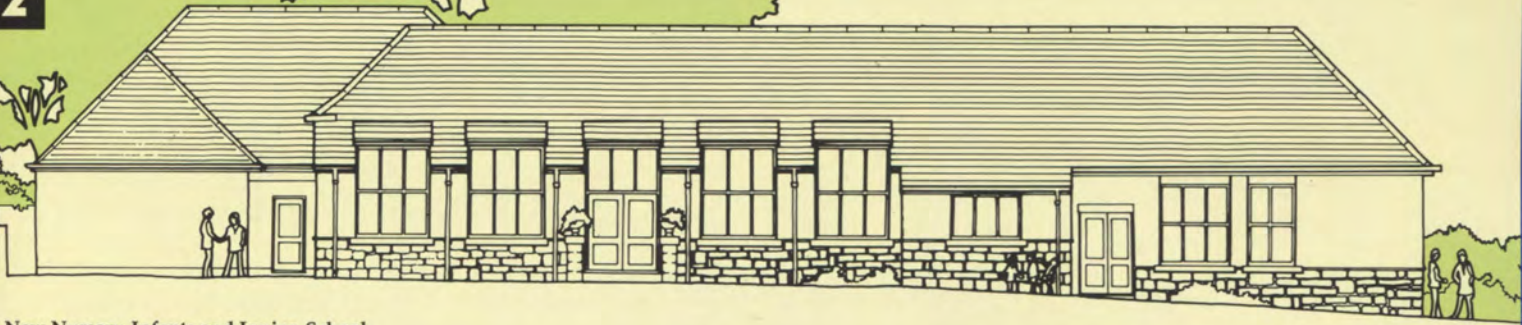
**1**

**Demolition**  
Willowdene (Junior School) and all 'huts' will be demolished and the area landscaped with additional car parking provision. The plan on the right shows how this development will affect a large area of the School and how it will improve the aspect of the adjoining new development of the Nursery, Infants and Junior School building (2).

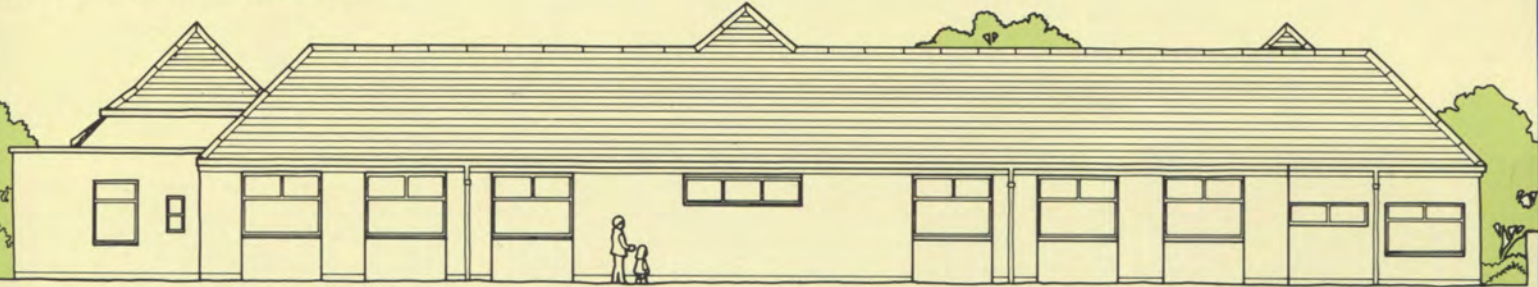


Two of the huts which will be demolished.



**2**

A New Nursery, Infants and Junior School



The present Pigot and Kennedy House areas, shown as a new development at the top of the lower plan on the opposite page, will be converted into a new Nursery, Infants

and Junior School. This is an exciting and innovatory scheme which will include new roofing for the building as a whole to replace unsatisfactory flat roofs. Eight classrooms, a library,

music room and space for art and technology will be provided and junior boarders will be housed in this building.

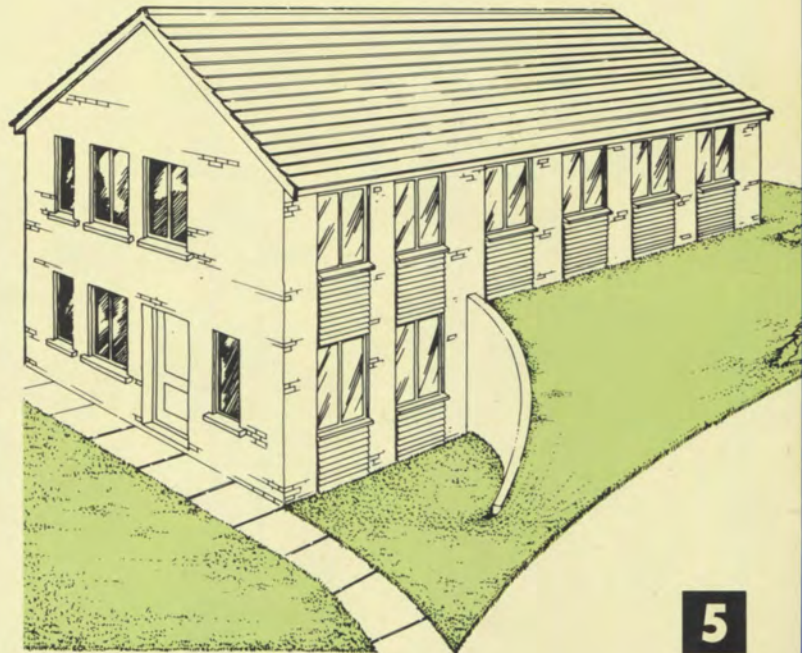
**3**

### Devonshire Extension

Lower and Upper Sixth Form boarders will be given comfortable study bedrooms with improved recreational facilities in the new Devonshire building extension. Additional staff accommodation will also be provided.



Existing study bedrooms of a similar type to those proposed in the new extension.

**4**

### Orchards Refurbishment

This work will create a new and comfortable boarding unit for girls in the age range eleven to sixteen.



Orchards, a victorian stone building, is in need of complete refurbishment.

**5**

### Heating and Safety Precautions



The School will be re-equipped with the most modern heating systems, whilst fire and safety precaution equipment will be entirely up-graded to ensure maximum safety and security.

## FUNDING THE STRUCTURE PLAN

In the past there has been tremendous support shown to St Elphin's. Without your help it would not have been possible to achieve present standards within the School.

The School must now look to the 21st century in a positive and adventurous way, and we ask you to give generously to this Appeal for £550,000 of which £200,000 has been provided already by the Governors and Friends. The balance of the monies, £350,000, must be raised through this Appeal. This page shows how you can help.

The possibilities are endless . . . tax efficient covenants, loans, gifts or support for the various fund-raising events being organised over the next 12 months. Please consider the following:

- Covenants : Personal** Giving by deed of covenant allows us to derive the best value from your gift and allows you to give more by spreading payments over a number of years. With income tax at the current rate of 25%, we can recover tax to the extent that £33 is added to every £100 you covenant – at no extra cost.  
Further details are shown on the covenant insert included in the pack of information opposite. If you are a higher rate tax payer please do remember to declare your charitable covenants in your tax return to ensure you obtain tax relief.
- Covenants : Corporate** Corporation tax relief is allowed to companies, other than close companies, on the gross value of single gifts to charities totalling in any one year up to 3% of the ordinary dividends paid in the same accounts period. For example, for a company paying corporation tax at 35%, the actual cost of a gift worth £1,000 to the St Elphin's Appeal should be only £650.  
Please discuss the availability of suitable forms for this method of giving with our Appeal Secretary as shown on the page opposite.
- Covenants : Lump Sum** Your circumstances may be such that you would prefer to make a single payment of not less than £100 but wish us to retain the benefit of tax recovery. This can be done by a deposited or loan covenant. At no cost to you we receive an increase of 33% in the value of your gift. For guidance, a payment of £600 as a deposited covenant should be worth £1,000 to the St Elphin's Appeal after tax recovery, if you are a higher rate tax payer. The School benefits as well because the cash is available immediately.  
Details of this simple method of donating and the special forms which must accompany your payment can be obtained from the Appeal Secretary.
- Gifts** This helpful type of assistance can be adopted in many forms. Perhaps a donation of materials or services would be relevant to your circumstances.
- Loans** You may find that your financial arrangements could accommodate an interest-free loan to be repaid to you after a set period of time to suit your needs. This allows us access to immediate cash with the knowledge that its repayment can be achieved in the longer term.  
Details of this simple method of donating and the special forms which must accompany your payment can be obtained from the Appeal Secretary.
- Stocks and Shares** Another alternative, to suit your circumstances, may be the Direct Transfer of company stocks and shares, works of art or property to St Elphin's School. This avoids liability to capital gains tax and all specific direct gifts, including bequests, are exempt from inheritance tax.  
*The various options and permutations for this form of giving are endless. Please review the possibilities and then discuss your suggestion with the Headmaster, Mr Peter Pollard, or the Appeal Secretary, Mrs Joy Revell.*
- The 'Double Century Club'** We have been delighted to be invited by Her Grace the Duchess of Devonshire to hold a private function at Chatsworth House. This marvellous opportunity to enjoy the grandeur of one of our finest country houses is not to be missed. Details are available separately.
- Finally, Support** Please attend as many social and fund-raising events as possible. Your attendance will ensure the financial success of the whole Appeal, and as an added bonus you are sure to enjoy yourself as well!
- Further Information** Forms for single payment or company covenants, together with explanations of the procedures involved, are available from the Appeal Secretary. Requests for these, and any other assistance should be made to the Appeal Office, St Elphin's School. Personal gifts which deserve public recognition or recording, or instances where donors wish anonymity to be preserved, should be sent to Mr Peter Pollard, the Headmaster.



# St Elphin's School

Darley Dale, Matlock, Derbyshire DE4 2HA

Telephone Numbers

School 0629 733263

Headmaster 0629 732687

Bursar 0629 732314

Fax 0629 733956

# The Double Century Club

---



*Having considered the various ways of raising money to fund the structure plan, the Appeal Committee also wanted not only to highlight the generosity of those contributing substantially, but also to try to bring such people together at a special social function.*

*From this came the idea of forming the 'Double Century club', which the Duchess of Devonshire has referred to in her letter.*

*Each person (double for a couple) who gives*

- (1) a lump sum covenant of at least £380 (worth £500, through tax relief, to the Appeal Fund)*
- (2) a Deed of Covenant in excess of £95 per annum over 4 years, or*
- (3) most generously, any single payment over £500*

*will then be invited to a reception to be held in the Painted Hall of Chatsworth House on Saturday, 18th May, 1991. We shall provide entertainment and refreshments at this important black-tie function, for which accommodation will be limited.*

*We are of course most grateful to the Duchess of Devonshire for so kindly allowing Chatsworth to be used for this reception.*

*If you would like to be associated with this venture, please choose your preferred method of payment, fill in the covenant form or send your cheque as soon as possible to*

The Headmaster  
(Double Century Club)  
St Elphin's School  
Darley Dale  
Matlock  
Derbyshire DE4 2HA

*You will then receive a personal invitation to visit Chatsworth House on 18th May, 1991.*



# Deed of Covenant (Individuals)



St Elphin's School

# Bankers Order

I \_\_\_\_\_  
of \_\_\_\_\_  
\_\_\_\_\_  
POST CODE \_\_\_\_\_

Your full name in CAPITALS  
Your address in CAPITALS

I \_\_\_\_\_  
of \_\_\_\_\_  
\_\_\_\_\_  
POST CODE \_\_\_\_\_

## Hereby Covenant

with St Elphin's School for the benefit of St Elphin's School Appeal Fund 1990 that for 4/5/7 years as I have set out below (or during my life if shorter) I will pay the sum that will after the deduction of Income Tax at the basic rate for the time being in force amount to

## Request you to pay

to National Westminster Bank plc (60-06-31), Darley Dale, Matlock DE4 2EY for the credit of St Elphin's School Appeal Fund 1990 (A/c 80764193) the sum of

AMOUNT IN WORDS \_\_\_\_\_  
£ \_\_\_\_\_ FIGURES  
 Annually  
 Quarterly  
 Monthly  
from the \_\_\_\_\_ day of \_\_\_\_\_ 19\_\_\_\_\_  
for \_\_\_\_\_ NUMBER OF YEARS

Amount you wish to pay each year / quarter / month  
Tick appropriate box  
Date when payments are to start (must be after date of signature)  
Enter 4, 5 or 7

AMOUNT IN WORDS \_\_\_\_\_  
£ \_\_\_\_\_ FIGURES  
 Annually  
 Quarterly  
 Monthly  
starting on the \_\_\_\_\_ day of \_\_\_\_\_ 19\_\_\_\_\_  
for \_\_\_\_\_ NUMBER OF YEARS

Signed sealed and delivered by me

ON \_\_\_\_\_ 19\_\_\_\_\_  
SIGNATURE \_\_\_\_\_

Date of your signature  
Sign here

Bank please quote reference number \_\_\_\_\_

DATE \_\_\_\_\_  
SIGNATURE \_\_\_\_\_

in the presence of

WITNESS SIGNATURE \_\_\_\_\_  
WITNESS ADDRESS \_\_\_\_\_  
\_\_\_\_\_  
POST CODE \_\_\_\_\_

Your bank name and address in CAPITALS  
Witness signature  
Witness address  
Your bank account number  
Bank sort code

Bank details

TO (BANK) \_\_\_\_\_  
BANK ADDRESS \_\_\_\_\_  
POST CODE \_\_\_\_\_  
ACCOUNT No. \_\_\_\_\_  
BANK SORT CODE \_\_\_\_\_

Please ensure that all alterations are initialled and that all white sections are completed.

When completed please return the whole of this form to The Headmaster, St Elphin's School, Darley Dale, Matlock DE4 2HA. Do not send to your bankers.